

Нипел Аigner пневматичен шланг - резба 1/2" x 22 мм, 44 мм,  
10480

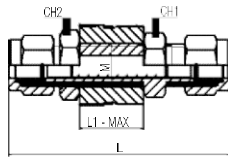


Ташев-Галвинг ООД  
[www.tashev-galving.com](http://www.tashev-galving.com)

## 10465

### DRITTO INTERMEDIO DI ATTRAVERSAMENTO

STRAIGHT BULKHEAD CONNECTOR  
 SCHOTTVERSCHRAUBUNG  
 RACCORD DROIT TRAVERSÉE DE CLOISON  
 RACOR RECTO INTERMEDIO PASATABIQUES  
 CONEXÃO RETA PASSAMURO TUBO-TUBO

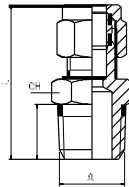


Code	Tube	L	L1 max	CH1	CH2	M	Pack.
10465 00 001	4	46.5	15	10	13	M8x1	10
10465 00 002	6	51.5	15		14	M10x1	10
10465 00 003	8	53	15	14	17	M12x1	10
10465 00 004	10	61.5	16	19	21	M16x1,5	10
10465 00 005	12	67.5	20	22	24	M18x1,5	10
10465 00 006	14	72	20	24	24	M20x1,5	10

## 10480

### RACCORDO DIRITTO MASCHIO CONICO

STRAIGHT MALE ADAPTOR (TAPER)  
 GERADE EINSCHRAUBVERSCHRAUBUNG KONISCH  
 RACCORD DROIT MÂLE CONIQUE  
 RACOR RECTO MACHO  
 CONEXÃO RETA COM ROSCA MACHO

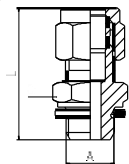


Code	Tube	A	L	CH	Pack.
10480 00 001	4	1/8	25.5	11	10
10480 00 002	4	1/4	28.5	14	10
10480 00 003	6	1/8	27.5	11	10
10480 00 004	6	1/4	31	14	10
10480 00 005	6	3/8	31.5	17	10
10480 00 006	8	1/8	28	13	10
10480 00 007	8	1/4	31.5	14	10
10480 00 008	8	3/8	32		10
10480 00 009	10	1/4	35		10
10480 00 010	10	3/8	35.5	17	10
10480 00 011	10	1/2	37	21	10
10480 00 012	12	1/4	36		10
10480 00 013	12	3/8	37		10
10480 00 014	12	1/2	37	21	10
10480 00 015	14	3/8	37	20	10
10480 00 016	14	1/2	39.5	21	10
10480 00 017	15	1/2	40	21	10
10480 00 018	16	1/2	42.5	22	10
10480 00 019	16	3/4	44	27	10
10480 00 020	18	1/2		24	10
10480 00 021	18	3/4	45.5	27	10
10480 00 022	22	1/2	44	30	10
10480 00 023	22	3/4	45.5	30	10

## 10485

### RACCORDO DIRITTO MASCHIO CILINDRICO

STRAIGHT MALE ADAPTOR (PARALLEL)  
 GERADE EINSCHRAUBVERSCHRAUBUNG ZYLINDRISCH  
 RACCORD DROIT MÂLE CYLINDRIQUE  
 RACOR RECTO MACHO CILINDRICO  
 CONEXÃO RETA COM ROSCA MACHO PARALELA



Code	Tube	A	L	CH	Pack.
10485 00 001	4	1/8	25	13	10
10485 00 002	6	1/8	26.5	13	10
10485 00 003	6	1/4	30	17	10
10485 00 004	8	1/8	28.5	13	10
10485 00 005	8	1/4	31	17	10
10485 00 006	8	3/8	34.5	22	10
10485 00 007	10	1/4	34.5	17	10
10485 00 008	10	3/8		22	10
10485 00 009	14	3/8	39.5	22	10
10485 00 010	14	1/2	42	27	10
10485 00 011	22	3/4	47	32	10
10485 00 012	22	1"	50	40	10

	min	max
Temperature	-20 °C	+80 °C

Продукт: [Нипел Aignep пневматичен шлах - резба 1/2" x 22 мм, 44 мм, 10480](#)

Категория: [Фитинги за пневматични системи](#)

Бранд: [Aignep](#)

Категория бранд: [Нипел Aignep](#)